

Applications

Make	Model	Year	Type
Chevrolet	Captiva	2007-2011	VCDi
	Cruze	2009-2011	
	Epica	2006-2011	
	Lacetti	2007-2010	
	Nubira	2007-2010	
Opel/Vauxhall	Antara	2006-2010	

Engine Code	
2.0	Z20S1, LLW/Z20DMH, RA420/Z20S1, Z20DM, Z20DMH

Our products are designed to be used correctly and with care for the purpose for which they are intended. No liability is accepted by Sonic for incorrect use of any of our products, and Sonic cannot be held responsible for any damage to personnel, property or equipment when using the tools. Incorrect use will also invalidate the warranty.

If applicable, the applications database and any instructional information provided has been designed to offer general guidance for a particular tool's use and while all attention is given to the accuracy of the data no project should be attempted without referring first to the manufacturer's technical documentation (workshop or instruction manual) or the use of a recognised authority such as Autodata.

It is our policy to continually improve our products and thus we reserve the right to alter specifications and components without prior notice. It is the responsibility of the user to ensure the suitability of the tools and information prior to their use.



Instructions

Engine Timing Kit
Opel/Chevrolet Diesel (Z20) - 2.0



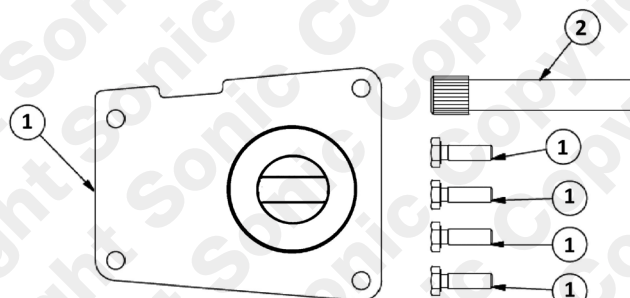
829061 - Engine Timing Kit

Description:

Developed for the Vauxhall/Chevrolet 2.0 common rail diesel engine found in the Vauxhall Antara, Chevrolet Captiva, Cruze, Epica, Lacetti and Nubira. This kit holds the correct timing position of the crankshaft and camshaft whilst changing the timing belt on the 16v SOHC belt driven diesel engines.

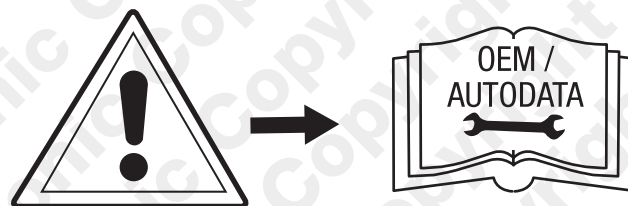
Components

Ref	Comp	OEM	Description
1	4880012	EN-48245	Camshaft Alignment Assembly
2	4880011	EN-48246	Crankshaft Setting Pin



Instructions

The following instructions are for guidance only. Please refer to OEM derived data such as the vehicles manufactures own data or Autodata. The use of these engine timing tools is purely down to the user's discretion and Sonic cannot be held responsible for any damage caused what so ever.

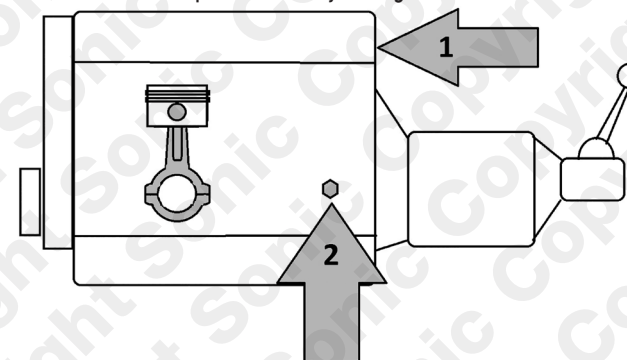
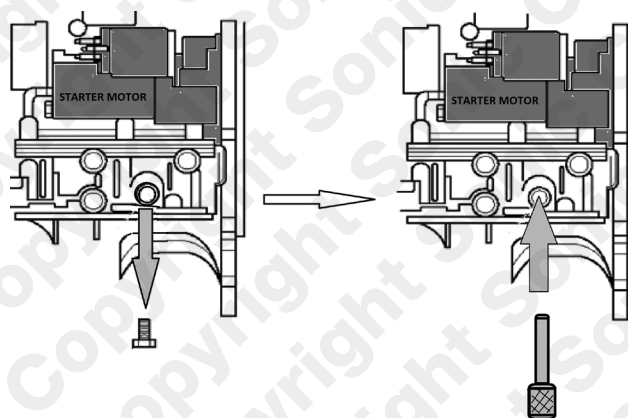


WARNING: Do not attempt to loosen or tighten any crankshaft fixing using these tools to lock the shafts as this may cause damage.

Instructions:

- Ensure timing marks are in their timed positions.

Crankshaft Alignment PIN (2)



Camshaft Alignment Tool (1).

