



User Guide

4" Air corner cut off tool

Trennschleifer, 4"-scheiben
Kapmaskin, 4" skivor
Kappemaskin, 4" skiver
Skæreværktøj, 4" skiver

Katkaisusaha, 4":n laikat
Przecinarka, 4" tarcze
Découpeuse, disques 4"

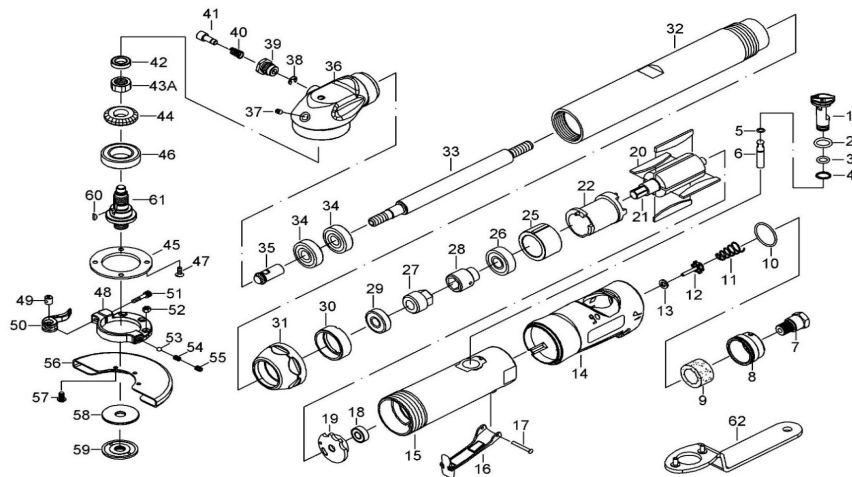
Art. Nr: PT6612

Product Specifications



Read and understand the owner's manual and labels affixed to the tool. Learn its application and limitations as well as the specific potential hazards peculiar to this tool.

4" HEAVY DUTY AIR CORNER CUT OFF TOOL



INDEX NO.	DESCRIPTION	REQ'D NO.	INDEX NO.	DESCRIPTION	REQ'D NO.
01	Air Regulator	1	35	Pinion Gear	1
02	O-Ring	1	36	Angle Housing	1
03	O-Ring	1	37	Grease Fitting	1
04	Snap Ring	1	38	Snap Ring	1
05	O-Ring	1	39	Nut	1
06	Valve Stem	1	40	Spring	1
07	Air Inlet	1	41	Pin	1
08	Exhaust Sleeve	1	42	Bearing	1
09	Silencer	1	43A	Nut	1
10	O-Ring	1	44	Pinion Gear	1
11	Spring	1	45	Face Plate	1
12	Valve	1	46	Bearing	1
13	Washer	1	47	Screw	4
14	Protecting Rubber	1	48	Guard Link	1
15	Housing	1	49	Bushing	1
16	Safety Throttle Lever	1	50	Latch	1
17	Spring Pin	1	51	Screw	1
18	Bearing	1	52	Nut	3
19	Rear Plate	1	53	Steel Ball	1
20	Rotor Blade	4	54	Spring	1
21	Rotor	1	55	Screw	1
22	Cylinder Set (Incl. Pin×2)	1	56	Disc Cover	1
25	Front Plate	1	57	Screw	3
26	Bearing	1	58	Washer (For Arbor Hole 3/8")	1
27	Coupling Nut	1	58	Washer (For Arbor Hole 5/8")	1
28	Coupling	1	59	Disc Nut	1
29	Bearing	1	60	Key	1
30	Nut	1	61	Shaft	1
31	Clamp Nut	1	62	Wrench	1
32	Spindle Housing	1	TK01	Angle Housing Set (36,37) (Option)	1set
33	Spindle	1	TK02	Spindle Lock Set (38,39,40,41) (Option)	1set
34	Bearing	2			

Operation Guides



Read and understand the owner's manual and labels affixed to the tool. Learn its application and limitations as well as the specific potential hazards peculiar to this tool.

1. TIPS FOR USE

(Safety Regulations while using ProMeister brand air tools)

1.1. AIR PRESSURE

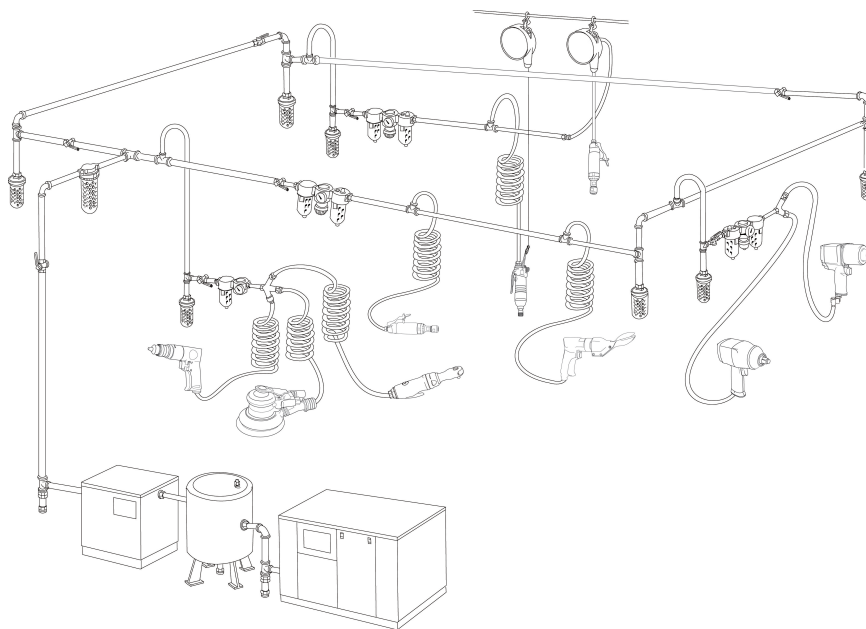
Always use the clean and dry air to operate the tool at 90 psi (6.2 bar) & do not operate exceed maximum working air pressure at 90 psi (6.2 bar) as recommended.

1.2. AIR LINE

Use a fitting air hose for connection between the compressor & tools. The compressed air is cooled and its water content would be sorted when the air blow out from the compressor. Part of the water could be compressed in the pipe and could permeate into the tool's mechanism to cause mechanical failures. It would be strongly recommended to install an air filter, moisture separator, regulator and lubricator among the air supply and the air tools.

1.3. AIR HOSE

Before connecting the hose to air tools, please clean firstly the hoses with a blowout of compressed air. This will prevent both moisture and dust contented within the hose from entering the tools and causing the possible rust and malfunction.



Art. Nr	SQUARE DRIVER	FREE SPEED	OVERALL LENGTH		AIR INLET	AIR HOSE I.D.	AVERAGE AIR CONSUMPTION		NET WEIGHT	
	inch	rpm	inch	mm	inch	inch	cfm	L/min	lb	kg
PT6612	4	14,000	13.6	345	1/4	3/8	4.1	116	3.09	1.40

Sound				Vib.	
Pressure	Power	Pressure	K	M/S²	K
db(A)	db(A)	db(C)	(DB)		
83.8	94.8	98.1	3	2.25	0.7

Operation Guides



Read and understand the owner's manual and labels affixed to the tool. Learn its application and limitations as well as the specific potential hazards peculiar to this tool.

2. Always wear protection for eyes, ears, and respiratory protection while operating this product. Follow your employer's safety policy local/national standards for eyewear and other personal protective equipment requirements.
3. Do not operate the tool in explosive atmospheres, such as in the presence of flammable liquids, gases, or dust.
4. Do not allow this tool to come into contact with electrical power sources as the tool is not insulated against electrical shock.
5. Ensure supply hose is oil resistant and is properly rated for required working pressure.
6. Do not use tools with loose or damaged air hoses and fittings.
7. Use care in attaching abrasive product and mounting hardware; following the instructions to ensure that they are securely attached to the tool before use.
8. Be aware that incorrectly installed hoses and fittings might unexpectedly come loose at any time and create a whipping/impact hazard.
9. The tool is intended to be operated as a hand held tool. It is always recommended that while using the tool, operators stand on a solid floor, in a secure position with a firm grip and footing.
10. Check hose and fittings regularly for wear.
11. Do not carry the tool by its hose; always be careful to prevent the tool from being started when carrying the tool with the air supply connected.
12. Dust can be highly combustible. Keep working area clean.
13. Do not exceed maximum recommended air pressure. Use safety equipment as recommended.
14. The tool is not electrically insulated. Do not use where there is a possibility of contact with live electricity, gas pipes, and/or water pipes.
15. Take care to avoid entanglement with the moving parts of the tool with clothing, ties, hair, cleaning rags or loose hanging objects. If entangled, stop air supply immediately to avoid contact with moving tool part.
16. Keep hands clear of the spinning cut-off wheel during use. If the tool appears to malfunction, remove from use immediately and arrange for service and repair.
17. Do not allow the tool to free spin without taking precautions to protect any persons or objects from the rupture of the abrasive cut-off wheel.
18. Immediately release the start handle in the event of any disruption of pressure; do not attempt to re-start until the disruption has been corrected.
19. When tool is not in use, store in a clean, dry environment free of debris and in a manner that ensures that the cutting-off wheel is not damaged.

Operational Methods

1. The on/off device is designed inside or outside of the grip. It is a "plug-and-run" type device. This tool will stop operation/rotation in a few seconds after relieving the level control.
2. Use accessories recommended by ProMeister. To use the accessories other than recommended by ProMeister may cause safety risk, decrease of tool performance.
3. The speed set up device is indicated by an arrow mark and intergraded with an indication either marked by "H"(high) and "L"(low) or by "+"(high) and "-"(low) rotating the knob to desired speed.
4. Always make sure collet size match shank size of accessory.
5. The cutting-off wheels and routing cutter wheels shall not be used.
6. Do not use any burr, wheel or other accessory of which maximum operating speed, defined by its manufacturer, is less than the rated speed of the tool.
7. To prevent excessive overhang, the mandrel shall be inserted to the full depth of the gripping jaws of the collet and the resulting overhung length shall be no greater than the inserted depth. Make sure that the minimum gripping length of 10 mm is observed.
8. Do not use this tool on materials of which dust or fumes can cause a potentially explosive environment.
9. Remove flammable objects from the working area to ensure that sparks and debris do not create a hazard when using this tool.

Operational Methods



Read and understand the owner's manual and labels affixed to the tool. Learn its application and limitations as well as the specific potential hazards peculiar to this tool.

10. Do not use an accessory that is chipped, cracked, non-concentric, excessively worn or otherwise damaged.
11. Inspect collet, threads and nut if any damage and wear occurred before mounting this accessory to the tool.
12. Thread-on collets shall be securely seated against the driving member.
13. Stop immediately if considerable vibration or other defects are detected. Shut off the air supply and determine the cause.
14. Improper mounting or damaged insert tool may cause excessive vibration.
15. Tool and/or accessories may briefly continue their motion after start and stop device has been released.
16. Check the speed and make a simple check of the vibration level after each service.
17. Do not use this tool if the actual free speed exceeds the rated speed.
18. Take special care when assembling the speed governor or any other protective device.
19. Check the free speed of the tool before each job.

Maintenance

1. Use of the tool may expose the operator's hands to hazards, including impacts, cuts and abrasions and heat. Wear suitable gloves to protect hands.
2. Operators and maintenance personnel shall be physically able to handle the bulk, weight and power of the tool.
3. Maintain a balanced body position and secure footing.
4. Release the start-and-stop device in the case of an interruption of the energy supply.
5. Use only lubricants recommended by the manufacturer.
6. Avoid direct contact with the inserted tool during and after use as it can become hot.
7. Be aware of the risk of a whipping compressed air hose.
8. Be aware of the risk of cutting with tools with large dimensions.

Repairs

Do make use of the spare parts for all the maintenance and repairing job.

Do not invent or make any unnecessary temporary repairs. Major service of maintenance and repairs should be only carried out by well-trained persons or ProMeister of its own authorized service representatives.

Make sure the free speed after each service.

Disposal

Following is the national legislation of waste disposal. Never dispose of the air tool into fire. Separate collection!! This product must not be disposed with normal household waste.

Warranty

All of ProMeister serial pneumatic tools are provided with complete after service and product warranty to the product that Bileko Car Parts AB which were produced in Taiwan.

ProMeister professional air tools, unless otherwise specified are unconditionally guaranteed against defects in materials and workmanship for the life of tool, excluding any other inappropriate operation, modification or repair.

ProMeister will repair or replace the tool that fails to give satisfaction service on the condition that tool has not been abused or modified and that it is returned to authorized warranty ProMeister dealer.

If there is a defective product claim of ProMeister, please contact the ProMeister's authorized sales/service representatives.



Warning



Read and understand the owner's manual and labels affixed to the tool. Learn its application and limitations as well as the specific potential hazards peculiar to this tool.

1. Please read, understand and follow all safety information contained in these instructions prior to the use of this tool.
2. Read, understand and follow the safety information contained in these instructions prior to the use of this tool. Retain these instructions for future reference.
3. Only personnel who are properly trained should be allowed to service this tool.
4. Work alert, have proper attire, and do not operate tools under the influence of alcohol or drugs.
5. Operators and other personnel must always wear protection for eyes, ears, and respiratory protection when in the work area or while operating this product.
6. Wear protective apparel, taking into consideration the type of work being done.
7. Never exceed marked maximum input pressure (90psi / 0.62MPa / 6.2bar).
8. Proper eye protection must be worn at all times.
9. If you notice any abnormal noise or vibration when operating the product, immediately discontinue its use and inspect for worn or damaged components (mounting hardware, abrasive product, etc).
10. Correct or replace component. Repair or replacement. Refer to warranty instructions.
11. Never operate this tool as a cut-off tool without all guards or safety features in place.
12. Prior to use, ensure guard is oriented to protect the operator from flying fragments and is properly secured.
13. Make sure the tool is disconnected from its air source before servicing, inspecting, maintaining, cleaning, and before changing abrasive product.
14. Insure the abrasive product is correctly secured.
15. Do not use cut-off wheel tool for side grinding.
16. Keep hands, hair, and clothing away from the cutting part of the tool.
17. Wear suitable protective gloves while operating tool.
18. Do not touch the rotating parts during operation for any reason.
19. Do not force tool or use excessive force when using tool.
20. If any physical hand/wrist discomfort is experienced, work should be stopped promptly to seek medical attention.
21. Hand, wrist and arm injury may result from repetitive work, motion and overexposure to vibration.

Lubrication & Maintenance

- Lubricate the tool daily on the air inlet with high quality air tool oil.
- Lubricate the gear box once every 10hours of usage with the recommended lubricants (SHC Gear 46M Mobil / Molykote longterm 2 plus)



EC Declaration of Conformity

We,

Bileko Car Parts AB
P.O. Box 542,
S-645 25 Strängnäs,
Sweden

Herewith declare that the following machine complies with the appropriate basic safety and health requirements of the EC Directive based on its design and type, as brought into circulation by us.

In case of alteration of the machine, not agreed upon by us, this declaration will lose its validity:

Description: 4" Heavy Duty Air Corner Cut Off Tool

Type: Art nr: PT6612

Applicable EC Directives: EC Machinery Safety Directives (2006/42/EC)

Applicable Harmonized Standards: ISO 12100 (Risk Assessment & Risk Reduction)
ISO 11148-7 (Safety Requirements)
ISO 15744 (Noise Level)
ISO 28927-1 (Vibration Level)

Date / Authorized Signature: 2018-05-15

Title of Signatory:

Tobias Peter Narvinger
Chief Purchasing Officer

