

Our products are designed to be used correctly and with care for the purpose for which they are intended. No liability is accepted by the Tool Connection for incorrect use of any of our products, and the Tool Connection cannot be held responsible for any damage to personnel, property or equipment when using the tools. Incorrect use will also invalidate the warranty.

If applicable, the applications database and any instructional information provided has been designed to offer general guidance for a particular tool's use and while all attention is given to the accuracy of the data no project should be attempted without referring first to the manufacturer's technical documentation (workshop or instruction manual) or the use of a recognised authority such as Autodata.

It is our policy to continually improve our products and thus we reserve the right to alter specifications and components without prior notice. It is the responsibility of the user to ensure the suitability of the tools and information prior to their use.



Safety First. Be Protected.

Guarantee

If this product fails through faulty materials or workmanship, contact our service department direct on: +44 (0) 1926 818186. Normal wear and tear are excluded as are consumable items and abuse.



Distributed by The Tool Connection Ltd

Kineton Road, Southam, Warwickshire CV47 0DR
T +44 (0) 1926 815000 F +44 (0) 1926 815888
info@toolconnection.co.uk www.toolconnection.co.uk



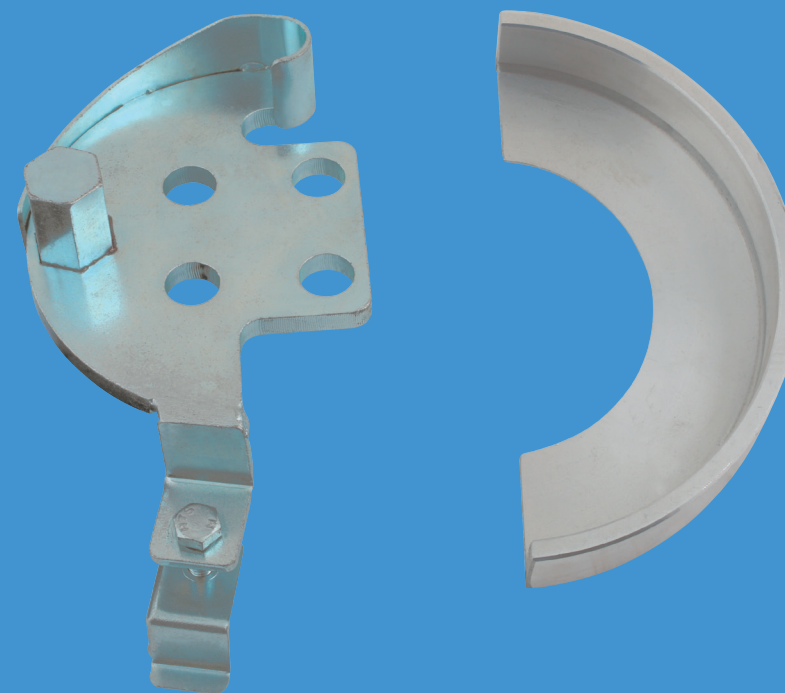
5919

LASER[®]

Stretchy Belt Fitting Kit

Ford | Volvo

Instructions

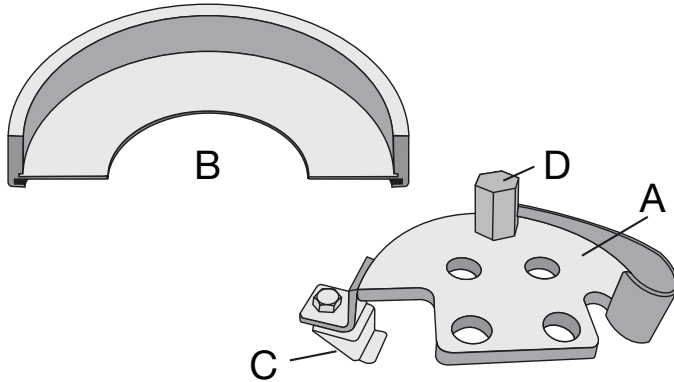


5919 Stretchy Belt Fitting Kit | Ford | Volvo

Designed to be used where the universal tools will not work due to the double width crankshaft pulley restricting access.

Vehicle applications include Ford Fiesta, Focus. C-Max, Mondeo (1.4. 1.6 petrol), Volvo S40, C30, V50 (1.6 petrol).

Components



A	Installation Tool
B	Guide Tool
C	Securing bracket
D	Drive hex (17mm)

Instructions

Important:

You must refer to the manufacturer's service instructions or documentation to establish the correct procedures for removing and installing auxiliary drive belts. The following notes and diagrams are provided as a guide only. No liability is accepted for incorrect use of this product.

- Working from under the R/H wheel arch, remove any guards or covers that may restrict access.
- Remove the existing belts. To enable the inner auxiliary drive belt to be replaced the outer A/C compressor belt must be removed also.
- Refer to Fig 1: Locate installation tool (A) over coolant pump pulley (3). Securing bracket (C) is located behind coolant pump pulley and then tightened.
- Locate drive belt guide tool (B) over crankshaft pulley (1) and rotate so that top centre of guide tool is at 12.00 o'clock. (Refer to Fig 1.).
- Refer to Fig 2: fit the new auxiliary drive belt on to the installation tool (A) and the remaining pulleys.
- With a suitable 17mm spanner or driver on the drive hex (D), turn the installation tool (A) clockwise approximately 180° until belt is correctly located on all pulleys. (Refer to Fig 2.)
- Loosen securing bracket (C) and remove the installation tool (A). Remove the drive belt guide tool (B). Crankshaft may have to be rotated to allow the drive belt guide tool to be released.
- Refer to Fig 3: turn engine through at least 360° and visually check that new auxiliary belt is correctly located on all pulleys.
- Fit new outer A/C compressor belt (recommend using Laser Stretchy Belt Tool Set, Part No. 4999).
- Reinstall any previously removed guards or covers.

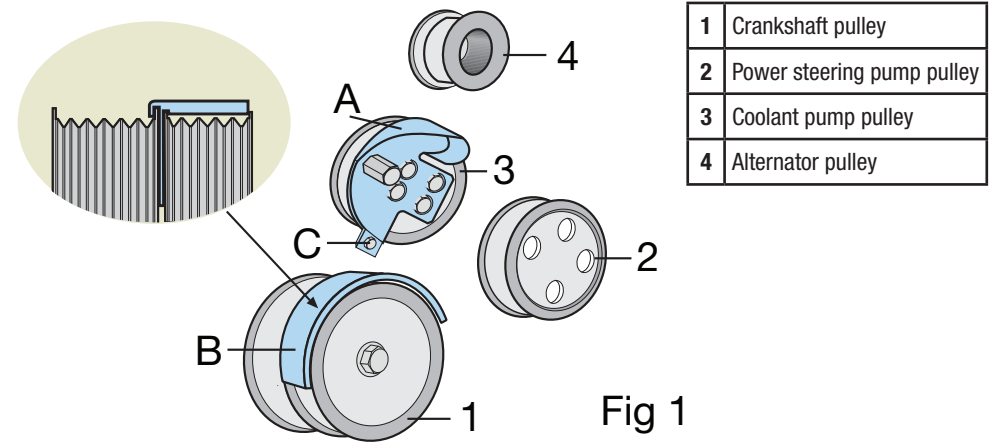


Fig 1

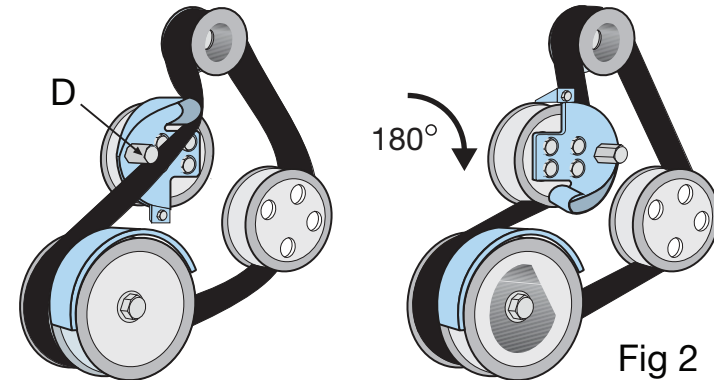


Fig 2

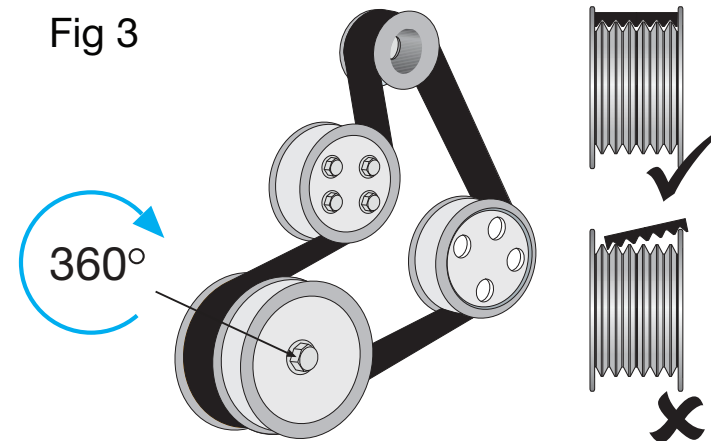


Fig 3