

# GEDORE

TOOLS FOR LIFE

## Wheel Bearing Tool with Hydraulic Cylinder



**KL-0041-43 B**



0041-43Be151217.docx

### GEDORE Automotive GmbH

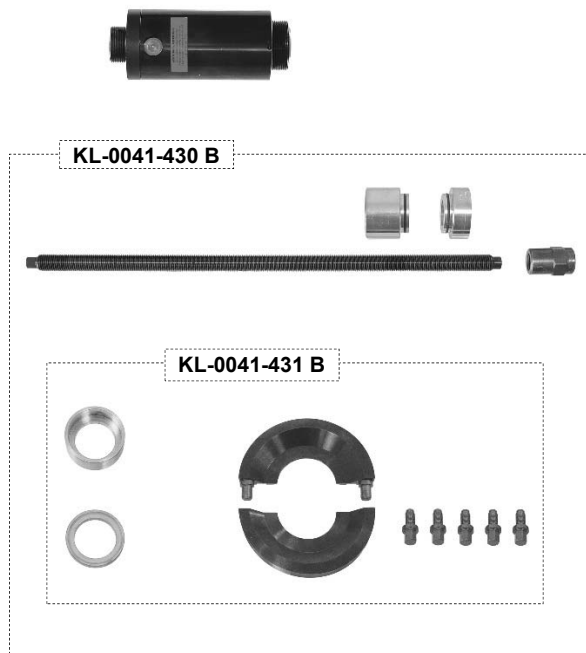
Breslauer Straße 41  
78166 Donaueschingen

Postfach 1329  
78154 Donaueschingen - GERMANY

Phone.: +49 (0) 771 / 8 32 23-0  
Fax: +49 (0) 771 / 8 32 23-90

Email: [info@gedore-automotive.com](mailto:info@gedore-automotive.com)  
Internet: [www.gedore.com](http://www.gedore.com)

### KL-0041-43 B

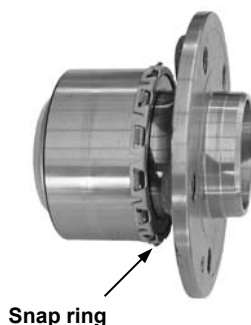


### Removing the wheel hub bearing unit:

**Accessory:**  
**KL-0041-38 Wheel Hub Puller, with Adjusting Spindle,**  
**17t Hydraulic Cylinder**



### Wheel Hub Bearing Unit



## KL-0041-43 B Wheel Bearing Tool with Hydraulic Cylinder

Suitable for vehicles with bearing Ø of 66mm, e.g. VW Polo (2002 onwards), Škoda Fabia (2000 onwards) etc.

### Field of Application

The **KL-0041-43 B** wheel bearing tool enables the quick and safe **installation** of wheel hub bearing units without the risk of damaging these.

**Note:** ⇒ **Wheel hub bearing unit removal:**

For the removal of wheel hub bearing units, the **KL-0041-38** wheel hub puller will be needed.

### Advantages

- Substantial time savings.
- The tool is easy to use.
- The **KL-0040-2500** hydraulic cylinder (17t) can be used universally on many other GEDORE Automotive tools to exert pulling or pushing force.

### Technical Data

Maximum load capacity of the hydraulic cylinder: ..... 17t

Maximum load capacity of pull spindle: ..... 20t

Weight: ..... 15.8kg



### Warnings and Notes

- Any work on vehicle axles should only be performed by qualified specialist personnel observing and complying with the directions, provisions, and safety regulations specified by the vehicle manufacturer!
- When working with hydraulic tools, special safety regulations have to be observed.
- Before use, lubricate spindle with molybdenum disulphide paste **KL-0014-0030**.
- Secure tool with safety belt **KL-0040-2590** to prevent it from falling.
- Always keep all parts of your body away from the line along which the hydraulic cylinder extends or retracts.
- For the removal of wheel hub bearing units, the **KL-0041-36** or **-38** wheel hub puller will be needed.
- To drive the **KL-0040-2500** hydraulic cylinder, a hydraulic pump such as **KL-0215-35 M25**, **KL-0215-36 M25** or **KL-0215-37 M25** will be needed.

Fig. 1: Mounting the clamping shells.

“A”



“B”

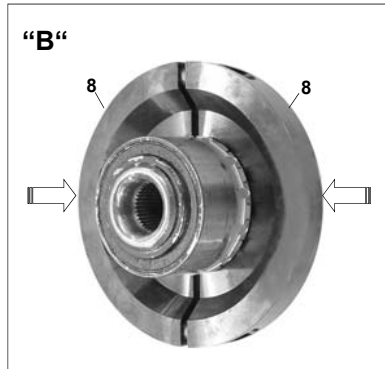


Fig. 2: Mounting the pressure screws.

Screw pressure screws “9” evenly into wheel hub.

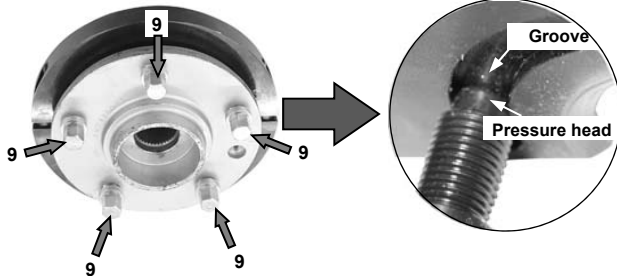
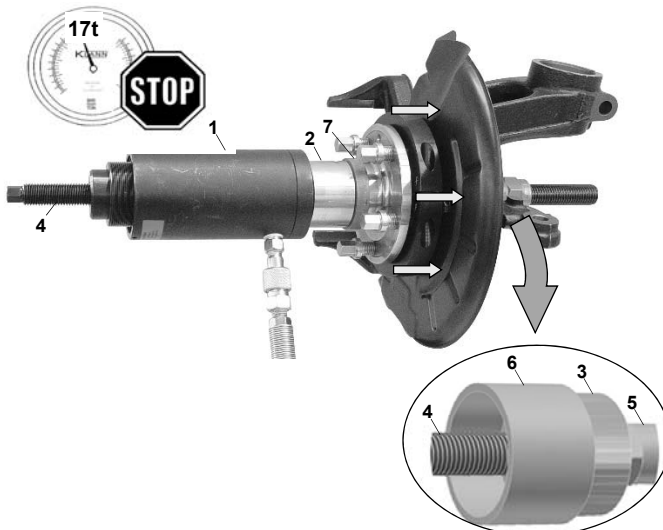


Fig. 3: Mounting the tool on steering knuckle.



## Correct Use

### Installing a Wheel Hub Bearing Unit:

1. Mount clamping shells “8” on wheel hub bearing unit as shown in **Fig. 1 A and B**.

2. Evenly screw pressure screws “9” into wheel hub until the screws with their pressure head properly engage in the groove of clamping shells “8” (**Fig. 2**). Slightly tighten pressure screws “9” uniformly in a crosswise sequence.

**Note:** If necessary, check that screws are level with each other using a vernier calliper.

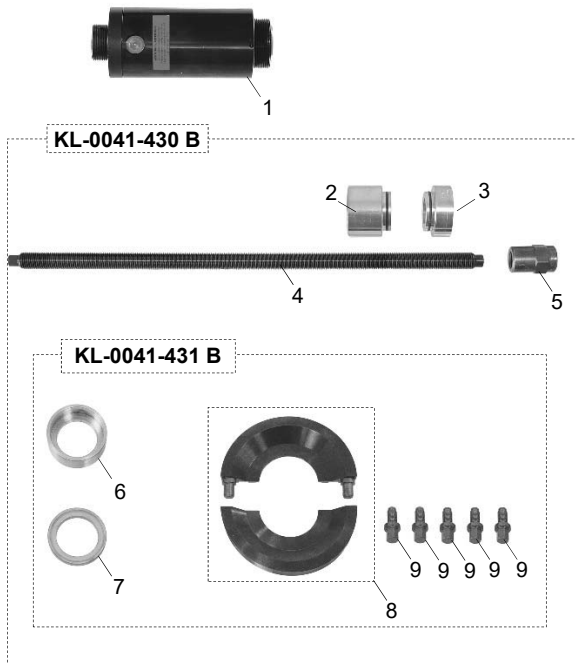
3. Mount tool on steering knuckle as shown in **Fig. 3**.

4. Operate hydraulic pump and install wheel hub bearing unit in steering knuckle. Stop the installation process as soon as the wheel hub bearing unit is correctly positioned.

**Note:** The wheel hub bearing unit is correctly positioned as soon as the snap ring is fully engaged in the groove and securely seated.

5. Remove tool and reassemble vehicle according to the manufacturer's instructions.

### Scope of Delivery:



### Accessory:

**KL-0041-38** Wheel Hub Puller, with Adjusting Spindle, 17t Hydraulic Cylinder



### Accessory:

**KL-0215-35 M25** Hydraulic Hand Pump



### Scope of Delivery

Pos.	Part No.	Description	Qty
-	<b>KL-0041-43 B</b>	<b>Wheel Bearing Tool with Hydraulic Cylinder, Ø 66mm</b>	<b>1</b>
<i>composed of:</i>			
-	<b>KL-0041-430 B</b>	<b>Wheel Bearing Tool without Hydraulic Cylinder, Ø 66mm</b>	<b>1</b>
1	KL-0040-2500	Hydraulic Cylinder (17t)	1
Pos.	Part No.	Description	Qty
-	<b>KL-0041-430 B</b>	<b>Wheel Bearing Tool without Hydraulic Cylinder, Ø 66mm</b>	<b>1</b>
<i>composed of:</i>			
-	<b>KL-0041-431 B</b>	<b>Upgrade Kit, VW Polo/Škoda Fabia, Bearing Ø 66mm</b>	<b>1</b>
2	KL-0039-1003	Retaining Adaptor with O-Rings, for Hydraulic Cylinder	1
3	KL-0039-1002	Retaining Adaptor with O-Rings, for Clamping Nut and Pressure Spindle	1
4	KL-0039-1920-1	Pull Spindle, M20	1
5	KL-0040-3009	Clamping Nut	1
Pos.	Part No.	Description	Qty
-	<b>KL-0041-431 B</b>	<b>Upgrade Kit, Ø 66mm</b>	<b>1</b>
<i>composed of:</i>			
6	KL-0041-4204	Pressure/Support Sleeve	1
7	KL-0039-1265	Pressure Ring, Ø 65mm	1
8	KL-0041-4300 B	Clamping Shells (Pair), Ø 66mm	1
9	KL-0041-3931	Pressure Screw, M14x1.5	5

### Accessories:

**KL-0041-38** - Wheel Hub Puller with Adjusting Spindle, with 17t Hydraulic Cylinder (German Utility Model)

The **KL-0041-38** wheel hub puller allows for the quick, safe and precise removal of wheel hub bearing units and wheel hubs. Even bonded, seized or heavily corroded wheel hub bearing units or wheel hubs are no longer an issue thanks to the hydraulic cylinder **KL-0040-2500**.

**KL-0041-380** Wheel Hub Puller with Adjusting Spindle, without Hydraulic Cylinder

Like the **KL-0041-38**, but supplied without the **KL-0040-2500** hydraulic cylinder and **KL-0040-2547-1** pull spindle (M20x550).

### Accessory:

**KL-0215-35 M25** Hydraulic Hand Pump

The hydraulic hand pump **KL-0215-35 M25** is used in conjunction with the **KL-0040-2500** hydraulic cylinder as a drive for our pulling and pressing devices.

**Note:** The hydraulic pressure and necessary force can be monitored while operating the pump at pressure gauge **KL-0040-2529** (supplied with the tool set). The pressure gauge features an additional tonne scale which is precisely adapted to our **KL-0040-2500** hydraulic cylinder (17t).

### Scope of Delivery (KL-0215-35 M25)

Part No.	Description	Qty
KL-0215-33	Hydraulic Hand Pump (without hose)	1
KL-0215-31	Hydraulic Hose, 1.8m, with Hose-Side Coupling	1
KL-0215-322	Cylinder-Side Coupling, 1/4"NPT	1
KL-0040-2520	Adaptor, 3/8"NPT to 1/4"NPT	1
KL-0040-2529	Pressure Gauge	1

Weight:..... 7.5kg

Pressure max.: ..... 700bar