

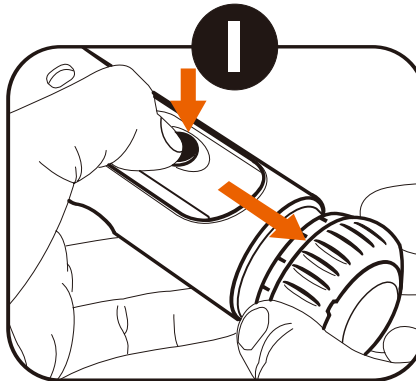
## Screen Torque Wrench

### Warning

1. For the first time torque wrench is used or after an unused period, should pre-operate with the highest torque setting for 5-10 times before actual operation. The purpose is to ensure components inside completely lubricated by our special grease.
2. The torque setting must be in the lowest when you don't use.

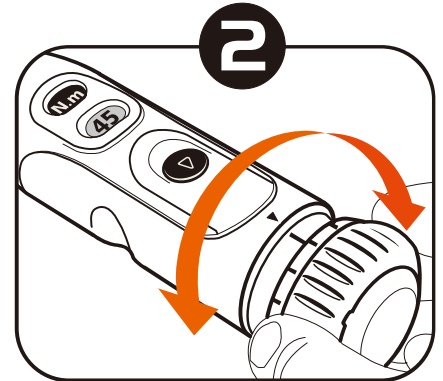
### Maintenance

1. To guarantee its precision, all the torque wrench tools require regular maintenance and calibration.
2. Examine your torque wrench at least every 5,000 loads cycle or once a year on a traceable calibrated test device.
3. For the tools used intensively or irrelevantly, we recommend doing recalibration before operation.



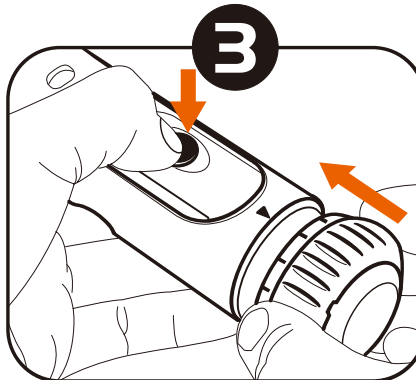
Press the safety button and simultaneously pull out the adjustment ring with scale at the same time.

**Note:**  
Incorrect operating causes damage locking function.



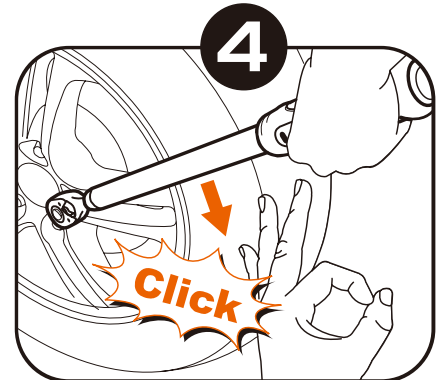
Turn the adjustment ring to adjust the desire value on the scale with convex lens.

**Note:**  
Do not turn the adjustment knob neither below the lowest measurement ("stop" indicator) nor above the highest measurement.



Press the safety button and simultaneously press in the adjustment ring.

**Note:**  
Conversion scale is on the tube.  
(N·m & Lbf·ft)



Hold the handle firmly in the middle to move the torque wrench clockwise carefully and stop immediately after "click".

**Note:**  
It is quite easy to release at low torque and there is almost no audible "click" sound. Operator should test how it feels under low torque setting to avoid accidentally overtightening and damage device.