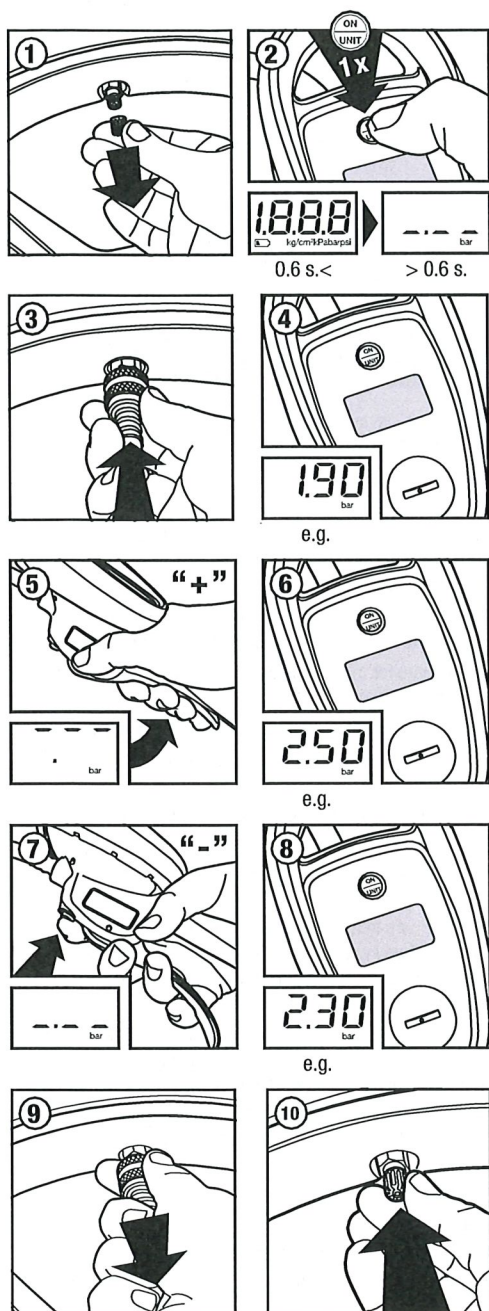


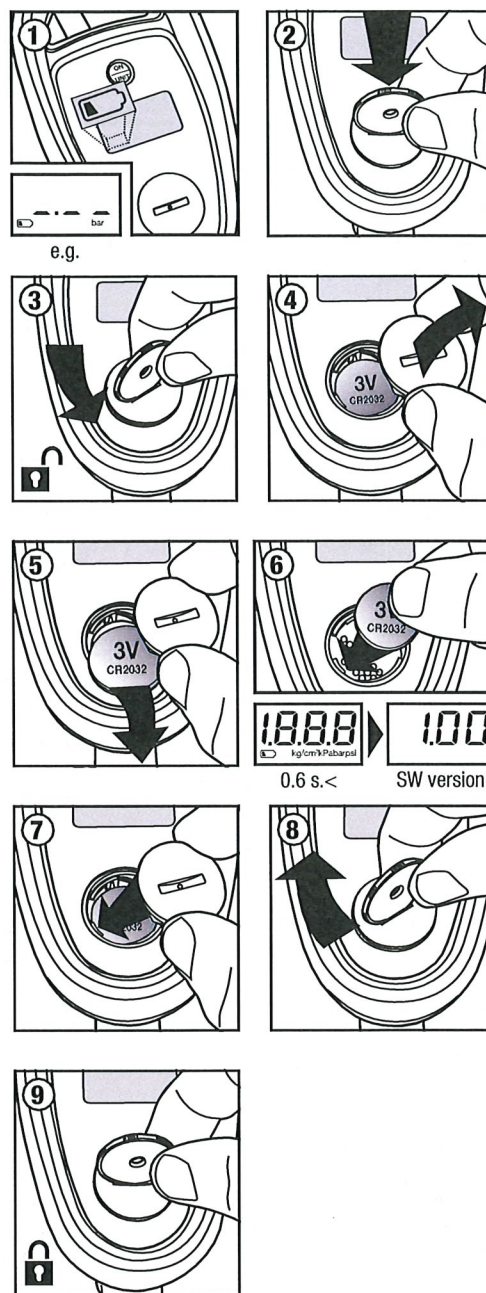
# AirBoy® eXact User Guide



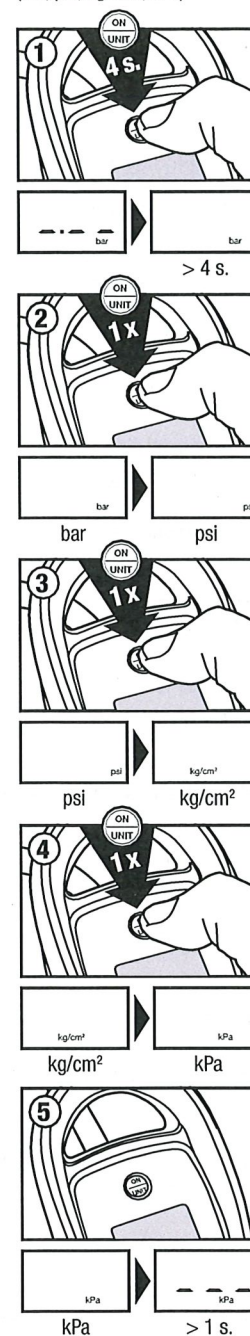
## 1. Measure tyre pressure



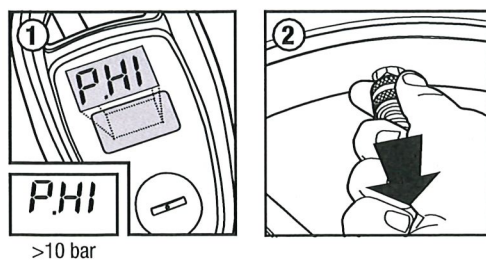
## 2. Change battery (1-9) / Insert Battery (2-4, 6-9)



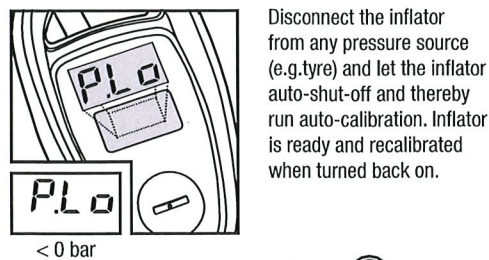
## 3. Change units (bar, psi, kg/cm², kPa)



## 4. Error - Pressure too high!

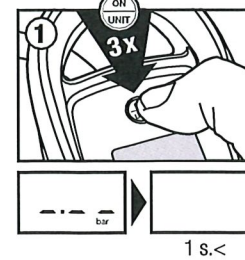


## 4. Error - Pressure too low!



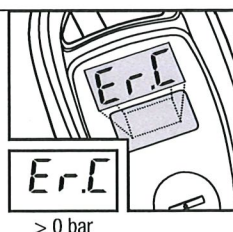
Disconnect the inflator from any pressure source (e.g. tyre) and let the inflator auto-shut-off and thereby run auto-calibration. Inflator is ready and recalibrated when turned back on.

## 5. Shut-off



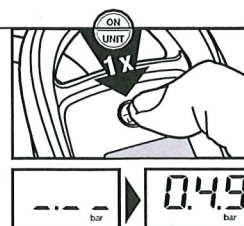
## 4. Error - Calibration

Recalibration cannot be done when connected to a pressure source (e.g. tyre) at shut-down.



## 4. Error - Display

If display "freezes" in wrong state - then press "ON" button to return to normal working condition. This can occur when inflating from flat or after a rapid series of in-/deflations.



**JWL A/S**  
Teknikervej 4,  
DK-8722 Hedensted,  
Denmark  
E: salg@jwl.dk, W: jwl.dk,  
T: +45 7589 1699